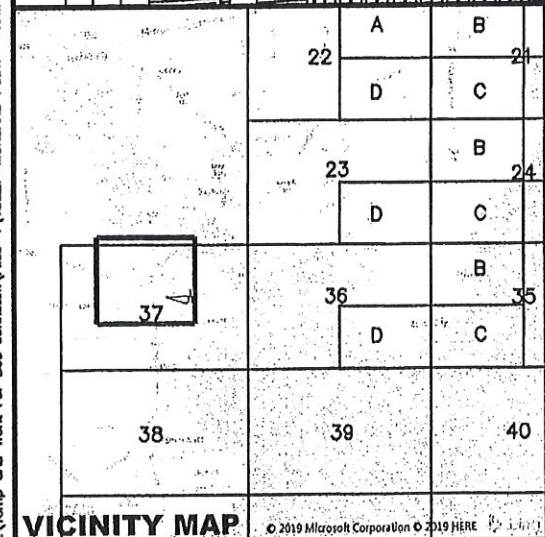
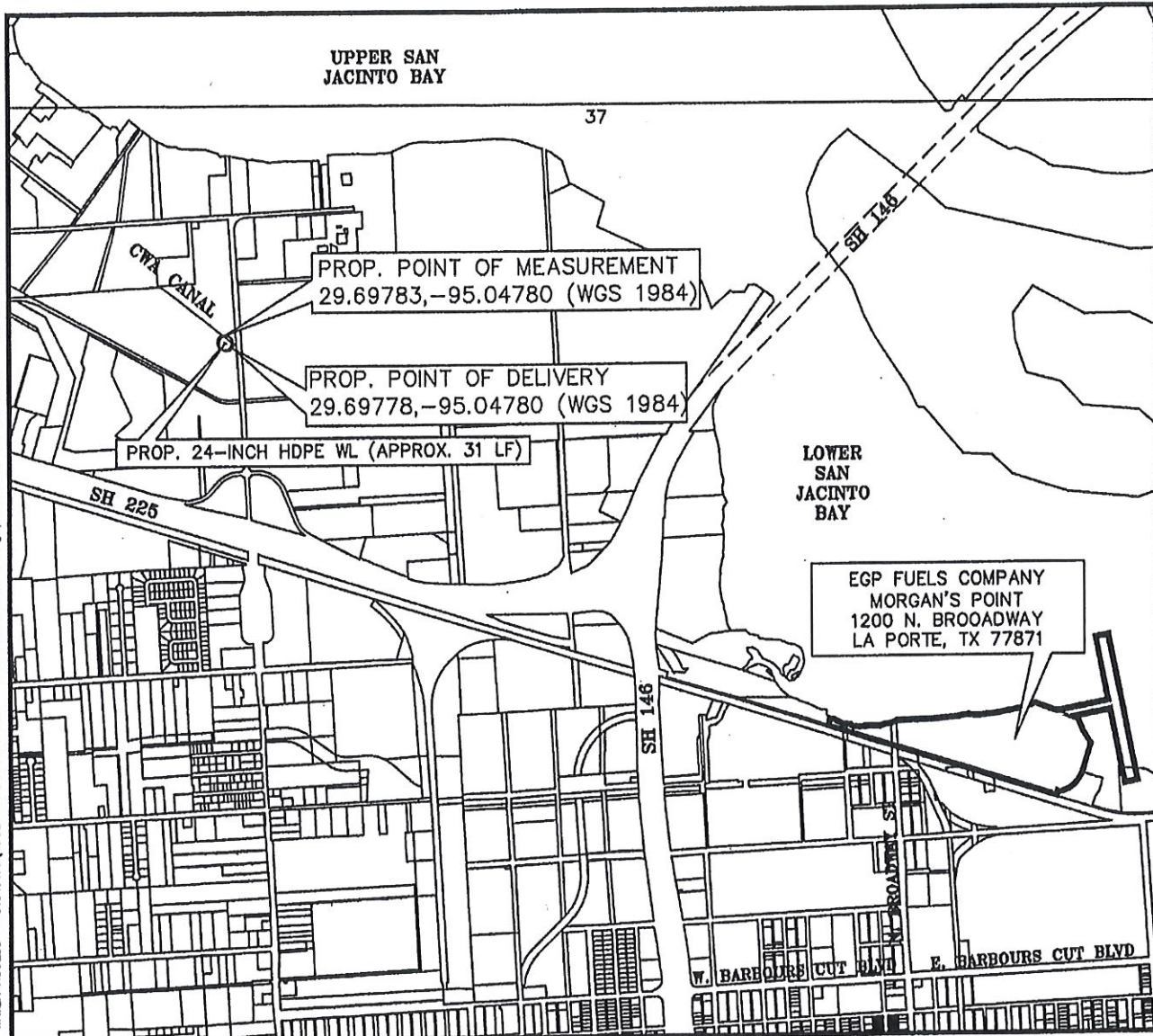


J:\Temp CAD Work For Bob Johnston\Files-1\13327-MORGANS POINT - RAW WATER ACCESS - Standard\13327-MORGANS POINT - RAW WATER ACCESS.dwg plotted on Feb 19, 2019 - 10:34am ACAD ver 21.0a (LUS Tech)

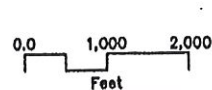


Chambers County, Texas
Untreated Water Supply Contract

EXHIBIT B
EGP FUELS COMPANY

Facility: MORGAN'S POINT
Facility Address: 1200 N. Broadway La Porte, TX 77871
Waterline Detail: Prop. 24-Inch HDPE WL (Approx. 31 LF)
Keymap(s): 37

COORDINATES:
Point of Delivery: 29.69778, -95.04780
Point of Measurement: 29.69783, -95.04780
Coordinate System: WGS 1984



VICINITY MAP

© 2019 Microsoft Corporation © 2019 HERE