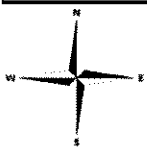
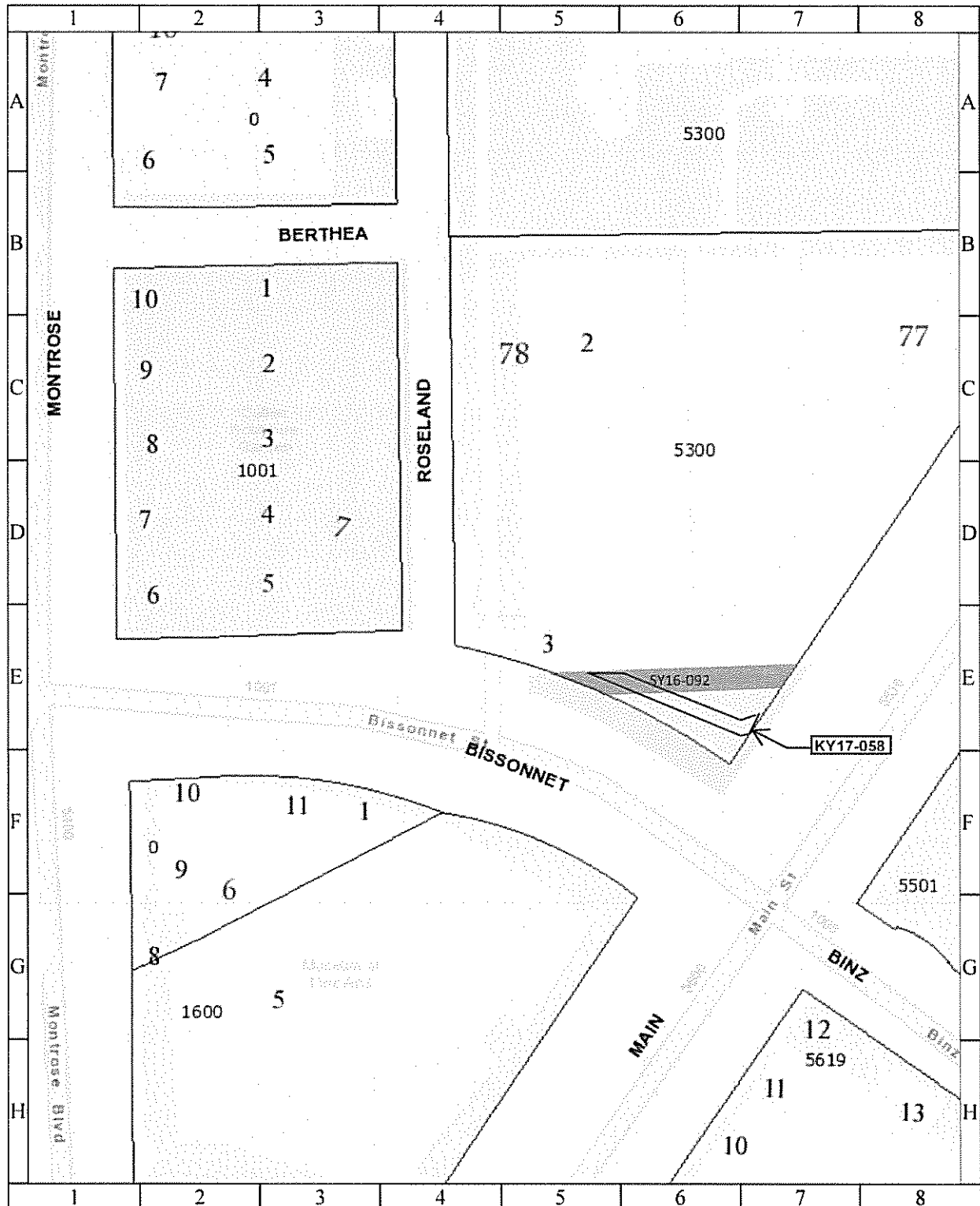


Abandonment and sale of a 20 foot-wide water line easement, in exchange for conveyance to the City of a 23 foot-wide water line easement, both located within Block 77 of the Turner's Addition, out of the Obedience Smith Survey, A-696, and Joseph Gamble Survey, A-309.



**1 inch = 29
feet**

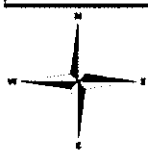
CITY OF HOUSTON
Department of Public Works and Engineering
Geographic Information & Management System (GIMS)

DISCLAIMER THIS MAP REPRESENTS THE BEST INFORMATION AVAILABLE
TO THE CITY
THE CITY DOES NOT WARRANT ITS ACCURACY OR COMPLETENESS.



Council District Map - Districts C and D - Parcels SY16-092 and KY17-058

Abandonment and sale of a 20 foot-wide water line easement, in exchange for conveyance to the City of a 23 foot-wide water line easement, both located within Block 77 of the Turner's Addition, out of the Obedience Smith Survey, A-696, and Joseph Gamble Survey, A-309.



1 inch = 34 feet

CITY OF HOUSTON
 Department of Public Works and Engineering
 Geographic Information & Management System (GIMS)

DISCLAIMER: THIS MAP REPRESENTS THE BEST INFORMATION AVAILABLE
 TO THE CITY
 THE CITY DOES NOT WARRANT ITS ACCURACY OR COMPLETENESS.



[illegible]

**Department of Public Works and Engineering
Geographic Information & Management System
(GIMS)**

DISCLAIMER: THIS MAP REPRESENTS THE BEST INFORMATION AVAILABLE TO